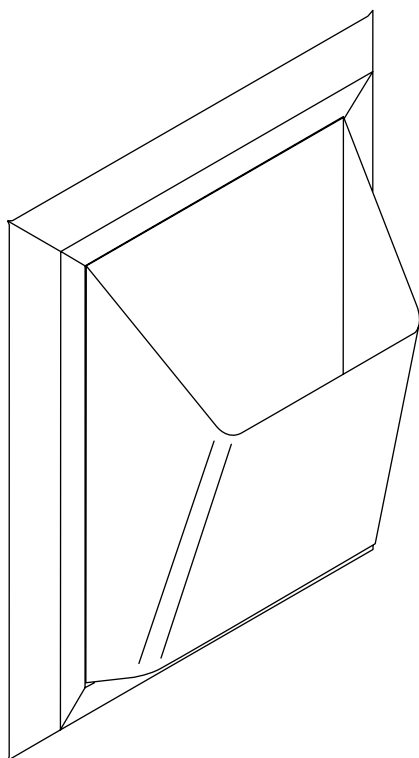


Technical Data Sheet

Anti-Ligature 11L Waste Bin

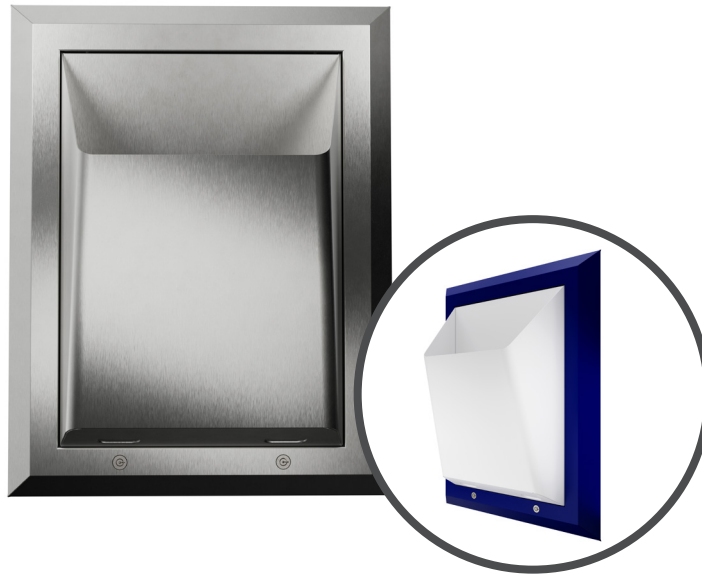
Applicable to products:

78860SS	Anti-Ligature 11L Waste Bin - Brushed
78860WW	Anti-Ligature 11L Waste Bin - White Powder Coated
78860WB	Anti-Ligature 11L Waste Bin - White Dispenser / Blue Wall Plate



Compact waste bin designed to help reduce the potential for self harm.

Product Image:



Product Description:

- 11L waste bin with open top providing easy disposal of paper towels.
- Contemporary angular design reduces the potential to attach a ligature for the purposes of self-harm.
- Created by experts in anti-ligature design.
- Manufactured from high grade stainless steel for robustness and durability.
- Finished with an attractive brushed steel surface or powder coated white or blue & white.

Available Finishes:

Brushed or powder coated

IMPORTANT:

The anti-ligature design features of this product do not replace or substitute the need for the necessary supervision of those who may be at risk, or for other protective measures to be taken in the specific circumstances of usage.

Dudley Industries Ltd does not claim any product to totally prevent ligatures being attached or make claims that they cannot be damaged by intent through vandalism. It is therefore the customer's responsibility to ensure the suitability of the product for the environment in which they are to be fitted, that they are installed according to the instructions and that the necessary supervision is in place.

Technical Data Sheet

Anti-Ligature 11L Waste Bin

78860SS, 78860WW, 78860WB



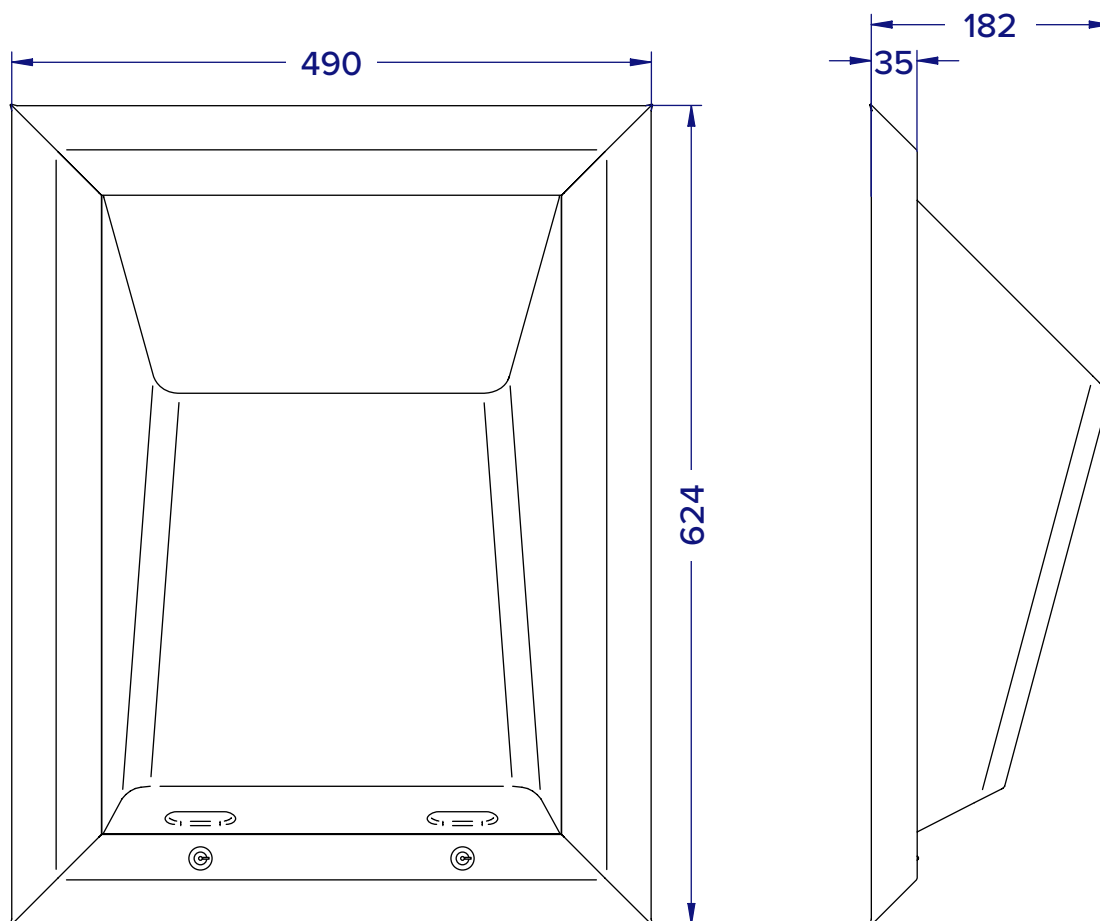
Product Specification:

Material:	Stainless Steel
Dimensions:	W.490mm x H.624mm x D.182mm
Finish:	Brushed / White Powder Coated / White & Blue Powder Coated
Warranty:	10 years

Available for specification at:



General Assembly:



Dudley Industries Ltd
Preston Road, Lytham St Annes, Lancashire. FY8 5AT



Tel: +44 (0) 1253 738311
Email: sales@dudleyindustries.com
Web: www.dudleyindustries.com